

SPECIFICATIONS

Model	HT1600UV- Gen6
Printhead	Ricoh Gen6
Quantity of printheads	2-8 pcs(Double rows)
Resolution	1200*1200dpi
Draft	46.5 m²/h
Print speed	Production 40 m²/h
Quality	29 m²/h
Max print width	1.6m
Max media thickness	50mm
Media type	Rigid and flexible flat materials
Ink	Environmental friendly UV/LED curable ink(VOC free)
Ink color	C、M、Y、K、Lc、Lm、W (varnish is optional)
Machine size(L*W*H)	4.32*1.26*1.37 m
Machine net weight	800KG
Machine gross weight	1210KG
Power consumption	5.3 KW(23A)
Power supply	230VAC, 50Hz L/N/PE
RIP support	Caldera
UV Curing	LED
Interface	High Speed PCIE
Environment	Seperated workroom in good cleaning and ventilated condition, avoid direct sunlight Temperature: 18° C – 30° C(64°F-86°F) Constant Humidity: 30%-70%



HT1600UV-Gen6

Create value for customers; be a world-leading manufacturer of smart digital printing equipment.

- Diversified product configuration and application solution can match the different demand in advertising, decorating, glass and other industries.
- Reliable stability combines the outstanding printing quality and speed performance.
- Top-level R&D team ensures prompt optimization and upgrade for new products and keep advanced technology in digital printing field.
- Strong worldwide after-sales service team quickly shoots your problem.
- High cost-value product brings you more business.

©Above information for reference only and subject to change without notice. Shenzhen Handtop Tech Co.,Ltd all rights reserved.



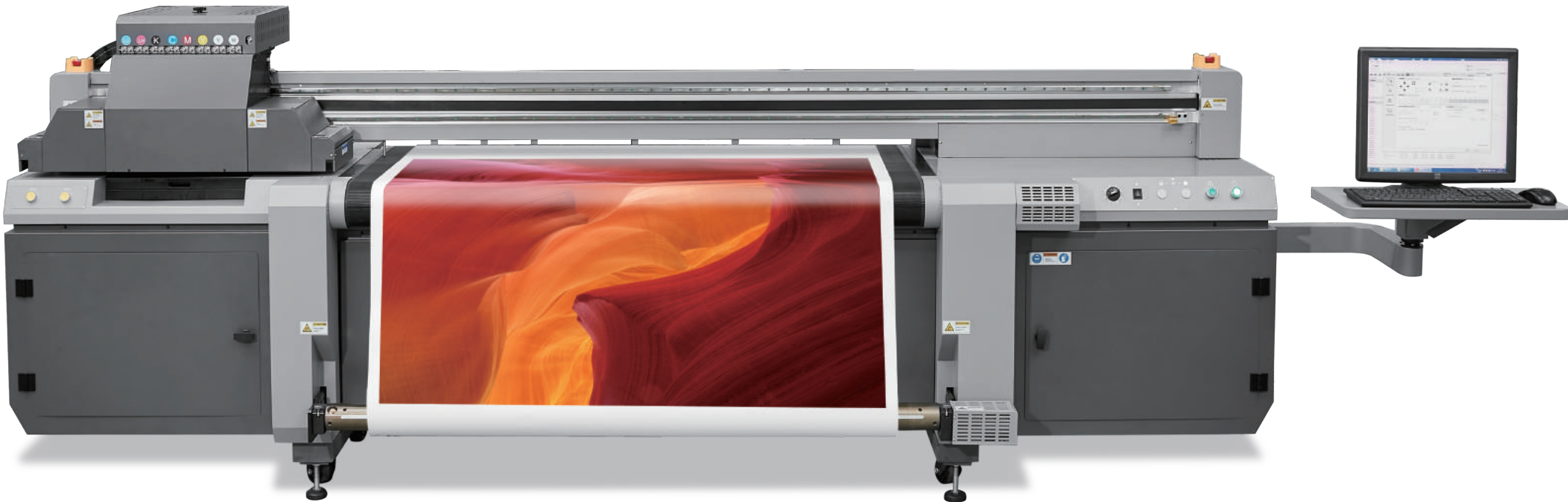
# HT1600UV Hybrid Printer



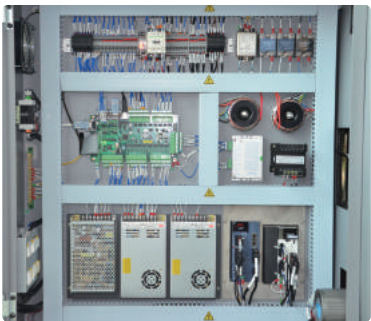
## HT1600UV Hybrid

1.6m width MEDIA AREA

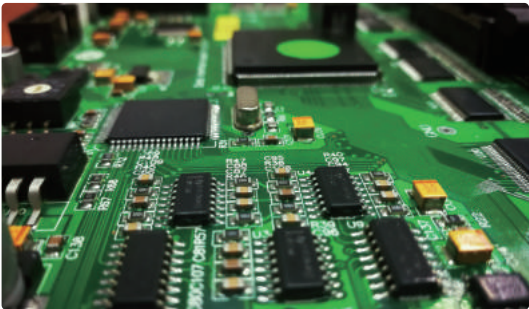
- **Automatic negative pressure system**  
Using PCB board to control negative pressure, setting the negative pressure data from software.
- **Ricoh Gen6 Print Heads(one head with 2 colors)**  
Featuring variable dots, true grayscale imaging 5, 10, and 15pl.
- **LED**  
Instant curing of UV ink for fast production. Flexible to be controlled during printing.
- **Auto Height Detection System**  
Automatically detects the height of media up to 50mm thickness and calibrates print head distance for variable dot placement and image quality.
- **Retractable Alignment Bar**  
Retractable alignment bar allows accurate and consistent media placement.



carriage head



Industrialized wiring makes it more artistic



Self-developed, customized driver and PCB board

### Ricoh Gen6 Printhead

Nozzle quantity : 1280  
Physical Resolution : 600dpi  
Pico-liter : Variable 5-10-15pl  
Max Operating Frequency : 50Khz  
Effective Print Width : 54.1mm



- **Static suppression(optional)**  
Optional static suppression kit that eliminates static on the substrate.
- **Emergency Stop Switches**  
Stop operation from any corner when the printer is in emergency.
- **On Board Control Module**  
Rich functions, self-developed software, independent control module, efficient and convenient.