

SPECIFICATIONS

Model	• HM 3200R — Hybrid		
Print Head	• Water-based Kyocera print head		
Pint head Qty	• 4—6 pcs		
Max Printing Resolution	• 600 x 1800 dpi		
Production Speed	• 600 x 600 dpi （1pass） • 360m ² /hr	• 600 x 1200 dpi （2pass） • 180m ² /hr	• 600 x 1800 dpi （3pass） • 120m ² /hr
Printing Height	• 2—30 mm		
Media Conveying	• Roll-to-Roll, Auto constant tension feeding&taking up		
Max Printing Width	• 3300 mm		
Max Media Width	• 3350 mm		
Dimension (L/W/H)	• Printer： 5600 mm x 1920 mm x 2150 mm • Package： 5800 mm x 1950 mm x 2240 mm		
Ink Type	• Water-based sublimation ink		
Ink Color	• 4-8 colors • C, M, Y, K, Orange, Blue, Flourescence yellow, Flourescence pink, Lc, Lm, Turquoise (optional)		
Ink Supply	• Peristaltic-pump ink supply, Ink degassing, Auto negative pressure system		
Media Type	• Transfer paper, coated or uncoated polyster		
Max Roll Diameter	• 500 mm (standard unwinder&winder roll)		
Max Roll Weight	• 200 kg (full width, standard unwinder&winder roll)		
Drying	• Hot air		
Rip Software	• Caldera, Neostampa, Texprint		
Power supply	• AC380V three phase 36A （22.7kW） 50Hz/60Hz		
Compressed air supply	• 0.6 Mpa 0.15m ³ /hr （dry,no oil or water）		
Working Environment	• Temperature: 20~28 ℃ （68~77 ℉ ） • Relative humidity: 45-60% （no condensing）		



HM 3200R

Industrial Digital Hybrid Dye-sublimation Printer

- Outstanding printing speed and quality; excellent reliability and stability.
- Advanced mechanic and software design; High-efficiency data processing technology.
- A dual purpose printing system that combines direct-to-polyester based textile printing with dye sublimation transfer printing technology.
- Top-level R&D team ensures continuous innovation and product optimization, and keeps us at the technology forefront in digital inkjet printing.
- Strong worldwide service team responds promptly to your questions and concerns.
- Cost-effective products bring you more business and profit.



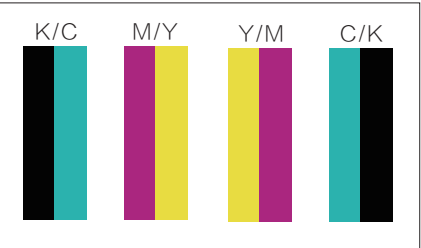
Shenzhen HOMER Textile Tech Co.,Ltd
Add: No.39 Qingfeng Road, Baolong Street, Longgang District, Shenzhen
(2-3/F, Building C, Jingmida Digital Culture Industry Park - HanGlory Group)
Tel: +86 0755-23080896 E-mail: info@hanglorygroup.com
Fax: +86 0755-23217841 Web: www.hanglorygroup.com/en



© The above information is for reference only. Shenzhen Homer Textile Tech Co., Ltd. reserves the right of final interpretation. Descriptions, illustrations and specifications hereof are subject to change without prior notice. Final details shall be subject to contract signed.



HM 3200R — Hybrid



Symmetrical color alignment

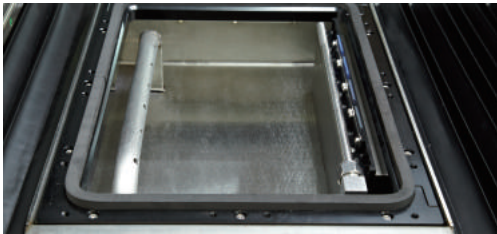
Color sequences are aligned in symmetry, so in back and forth printing the color aberration is reduced and color consistency is improved.

Up to 360 m²/hr printing speed

Attributed to advanced mechanical structure and self-developed high-performance hardware & software system, the equipment delivers printing speed up to 360 m²/hr.

Anti-scratch printhead protection design

The Anti-scratch system with laser sensors will suspend the printhead carriage for any potential media irregularities, to prevent damage to the printheads and maximize printheads' working life.



Intelligent constant-moisturizing capping system and Creative auto-wiping printhead self-cleaning system

Built-in humidifier enables mist spray automatically, so constant moisturizing of nozzles guarantees the stability of ink supply system and prevents blocked nozzles caused by dry ink. Automated head wiping removes the residual ink on the nozzle surface, to guarantee continuous printing.



Tension-adjustable continuous winding/unwinding control technology

Equipped with full servo motors for feeding and taking-up, the stepping accuracy of the machine is greatly enhanced. The laser sensor at the winding section measures the roll diameter in real time for constant and smooth winding.



Dye sublimation transfer paper printing



Home textile direct printing



Direct-to-textile signage printing

Kyocera-certified original ink

The Homer ink with Intertek certification has been certified by Kyocera, matching well with Kyocera print heads. It delivers pure color and smooth output.



Peristaltic-pump ink supply

Industrial ink supply system: Peristaltic-pump ink supply+Automated negative pressure monitoring & adjusting system+ Efficient ink degassing

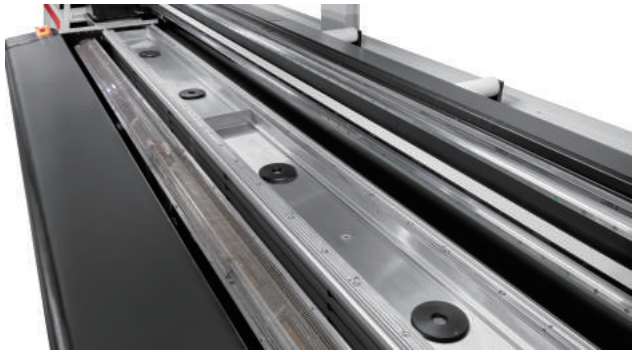
Peristaltic pumps keep the kinetic energy of ink supply at a constant level; negative pressure is detected and adjusted in real time automatically; the efficient degassing modules clear the bubbles in ink tubes to avoid ink starvation. These three designs work together to make ink spurted out smoothly to provide higher printing stability for industrial continuous production.

Integrated software control system

Self-developed control software is fully automatic for smart operation. One operator is able to control multiple machines.

Capable of using fabric and sublimation paper in one printer

Detachable platen for switching into Mesh platten for fabric printing or Vacuum platten for paper printing.



Adjustable vacuum system

The vacuum power can be adjusted by software for different printing media, so the media flatness is optimized to improve the accuracy of ink drop point.

