

SPECIFICATIONS

Model			HT1600UV		HT2500UV		HT3200UV							
Printhead			Ricoh Gen5		Ricoh Gen6		Ricoh Gen5		Ricoh Gen6					
Quantity of printheads			2 - 4pcs (Single row)		4 pcs (Double rows)		4 - 8 pcs (Double rows)		4 - 8 pcs (Double rows)					
Resolution			1200 * 1200 dpi											
Print speed	Draft	22 m <sup>2</sup> /h		52 m <sup>2</sup> /h		46 m <sup>2</sup> /h		65 m <sup>2</sup> /h		51 m <sup>2</sup> /h		74 m <sup>2</sup> /h		
	Production	14 m <sup>2</sup> /h		36 m <sup>2</sup> /h		33 m <sup>2</sup> /h		44 m <sup>2</sup> /h		36 m <sup>2</sup> /h		55 m <sup>2</sup> /h		
	Quality	10 m <sup>2</sup> /h		28 m <sup>2</sup> /h		23 m <sup>2</sup> /h		30 m <sup>2</sup> /h		24 m <sup>2</sup> /h		40 m <sup>2</sup> /h		
Print mode			Unidirectional & Bidirectional											
Max width			1.6 m				2.5 m				3.2 m			
Max media thickness			50 mm											
Media type			Rigid and flexible flat materials											
Ink			Environmental friendly UV/LED curable ink (VOC free)											
Ink color			C, M, Y, K, Lc, Lm, W (varnish is optional when there is no Lc and Lm)				C, M, Y, K, Lc, Lm, W							
Image format			Adobe Postscript Level3, PDF, JPEG, TIFF, EPS, AI											
Machine size(L*W*H)			4.15 * 1.19 * 1.33 m				5.49 * 1.15 * 1.38 m				6.19 * 1.59 * 1.56 m			
Machine net weight			760 KG				1280 KG				2260 KG			
Machine gross weight			1170 KG				1875 KG				3130 KG			
Power consumption			5.3 KW (27 A)				8.0 KW (20 A)				9.0 KW (20 A)			
Power supply			230 VAC. 50 Hz L/N/PE				400 VAC. 50 Hz 3P/N/PE							
Certification			CE / FCC											
RIP support			Caldera, Onyx											
UV curing			Water-cooled UV_LED Lamp											
Interface			High Speed PCIE											
Environment			Seperated workroom in good cleaning and ventilated condition, avoid direct sunlight Temperature: 18 – 30° C (64 - 86°F) Constant Humidity: 30 - 70%											

©Above information for reference only and subject to change without notice. Shenzhen Handtop Tech Co.,Ltd all rights reserved.



Shenzhen HANDTOP Tech Co.,Ltd

Add: No.39 Qingfeng Road, Baolong Street, Longgang District, Shenzhen  
(2-3/F, Building C, Jingmida Digital Culture Industry Park - HanGlory Group)

Tel: +86 0755-2796 0460  
Fax: +86 0755-2321 7841

E-mail: info@hanglorygroup.com  
Web: www.hanglorygroup.com/en



HANGLORY GROUP | HandTop



HANGLORY GROUP

HandTop



Create value for customers; be a world-leading manufacturer of smart digital printing equipment.

- Diversified product configuration and application solution can match the different demand in advertising, decorating, glass and other industries.
- Reliable stability combines the outstanding printing quality and speed performance.
- Top-level R&D team ensures prompt optimization and upgrade for new products and keep advanced technology in digital printing field.
- Strong worldwide after-sales service team quickly shoots your problem.
- High cost-value product brings you more business.



# HT3200UV/HT2500UV/HT1600UV Hybrid Printer

## HT3200UV Hybrid

3.2 m width MEDIA AREA

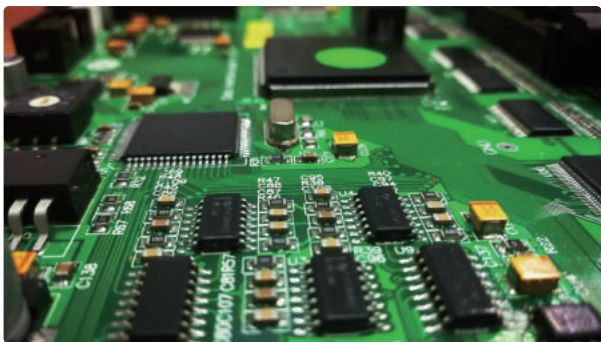
## HT1600UV Hybrid

1.6 m width MEDIA AREA

## HT2500UV Hybrid

2.5 m width MEDIA AREA

- 1 Automatic Negative Pressure System**  
Using PCB board to control negative pressure, setting the negative pressure data from software.
- 2 Ricoh Gen5 Print Heads (one head with 2 colors)**  
Featuring variable dots, true grayscale imaging 7, 14, and 21 pl.  
  
RicoH Gen6 Print Heads (one head with 2 colors)  
Featuring variable dots, true grayscale imaging 5, 10, and 15 pl.
- 3 Water-cooled UV\_LED Lamp**  
Instant curing of UV ink for fast production. Flexible to be controlled during printing.
- 4 Auto Height Detection System**  
Automatically detects the height of media up to 50 mm thickness and calibrates print head distance for variable dot placement and image quality.
- 5 The Tension Adjust Device(only for HT3200)**  
The tension adjust device for the roller added,this device will help to prevent the feeding wrinkle.
- 6 Retractable Alignment Bar**  
Retractable alignment bar allows accurate and consistent media placement.



Self-developed, customized driver and PCB board



Industrialized wiring makes it more artistic

### Ricoh Gen5 Printhead

Nozzle quantity : 1280  
Physical Resolution : 600 dpi  
Pico-liter : Variable 7 - 14 - 21 pl  
Max Operating Frequency : 30 Khz  
Effective Print Width : 54.1 mm



### Ricoh Gen6 Printhead

Nozzle quantity : 1280  
Physical Resolution : 600 dpi  
Pico-liter : Variable 5 - 10 - 15 pl  
Max Operating Frequency : 50 Khz  
Effective Print Width : 54.1 mm



- 7 Static Suppression(optional)**  
Optional static suppression kit that eliminates static on the substrate.
- 8 Emergency Stop Switches**  
Stop operation from any corner when the printer is in emergency.
- 9 On Board Control Module**  
Rich functions, self-developed software, independent control module, efficient and convenient.
- 10 Auto Belt Correction System (HT2500.HT3200)**  
Auto belt correction system will detect the moving of belt, if the shifting is detected, the system will automatically adjust the moving of belt to the right way.