



HM1800B-K24

Industrial High-speed Conveying-belt Direct-to-textile Digital Printer



Productivity up to 355m²/hr
in a high-resolution mode for
high efficiency



Resolution up to 600x2400dpi
for superior exquisite inkjet
printing quality



Brand new 8 colors×3 row
array stands out in the color
combination



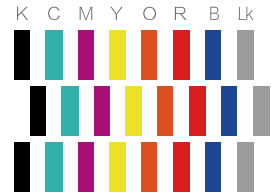
Multi-function optimization
with simplified operation,
workflow and maintenance



Complete digital textile
printing solution with various
options of ink and dryer

Specifications

Model	HM 1800B-K24			
Printing Parameters				
Printhead	24pcs / Industrial Piezoelectric Ceramic Print head			
Production Mode	Resolution	600x1200dpi (2pass)	600x1800dpi (3pass)	600x2400dpi (4pass)
	Productivity	355m ² /hr	236m ² /hr	177m ² /hr
Color	C, M, Y, K, O, R, B, LK			
Color Mode Supported	Standard 8 colors × 3 rows			
Ink	Reactive ink, disperse ink (direct/transfer), pigment ink			
Ink Tank Volume	15L			
Material Take-up Drying				
Material Information	Maximum Media Width	Maximum Printing Width	Applicable Material Weight	Maximum Weight of Small Roll
	1920mm	1900mm	30—450 g/m ²	100KG (full width)
Maximum Unwind Roll Diameter	Standard configuration: φ500mm Jumbo Roll: φ1600mm (optional) 1000Kg			
Media Type	Cotton, linen, silk, nylon, polyester, blended, elastic fabrics, etc.			
Media Conveying Method	Continuous belt-conveying, auto constant tension feeding & take-up			
Drying Method	Conveyor belt + electric heating hot air circulation dryer (optional: steam-type)			
Waste Gas Treatment	Hot air circulation, adjustable exhaust gas forcing system (exhaust gas optional)			
Electricity, Air and Water Parameters				
Water Supply	0.6 Mpa 1 m ³ /hr			
Compressed Air Supply	0.6 Mpa 3.5m ³ /hr (dry, oil-free and moisture-free)			
Printer Power & Voltage	AC 220 V±10% , single-phase 10 A(1.7KW) 50Hz/60Hz Conveying-belt drying AC 220 V±10% , single-phase 29A(6.5KW) 50Hz/60Hz			
Dryer Voltage (optional)	AC380V±10%, three-phase 31 A (16.5 KW) 50Hz/60Hz(Optional, Single-layer dryer with 1.6m tunnel For Reference Only)			
Cable Requirements	Printer: 3*4 mm ² , Dryer: 3*6 mm ² (Optional, Single-layer dryer with 1.6m tunnel For Reference Only)			
Working Environment				
Temperature Range	20~28 degrees Celsius (68~82 degrees Fahrenheit)			
Humidity Range	45 % -7 0 % (no condensation)			
Installation size				
Net Size & Weight of Printer (Jumbo Roll is not included)	4656 mm x 2300 mm x 2277 mm (L*W*H) Weight (kg): 3050			
Dryer Size & Weight	2280 mm x 2960 mm x 1730 mm (L*W*H) Weight (kg): 1200 (Optional, Single-layer dryer with 1.6m tunnel For Reference Only)			
Printer Packaging Size	4850mm x2250 mm x2250 mm (L*W*H) Weight (kg): 3900			
Dryer Packaging Size	2280mm x2960 mm x1730 mm (L*W*H) Weight (kg) 1600 (Optional, Single-layer dryer with 1.6m tunnel For Reference Only)			
Minimum Installation Site Size (A-frame feeder is not included)	8650 mm x 7050 mm x 2500 mm (L*W*H) (The above site size is based on a single-layer Dryer with 1.6m drying tunnel. For other dyers, please contact HOMER Company)			



8-color x 3 Inkjet Solution

Brand new 8 colors×3 row array improves jetting location accuracy of ink droplets
Delicate textile printing with outstanding color performance



Collocation of Linear Motor and Steel Guide Rail

The combination of high-precision steel guide rail beam and advanced magnetic levitation motor keeps the carriage stable and smooth during the printing process and improves productivity.

Wind/Unwind Tension-adjustable Technology

The continuous winding/unwinding control technology with adjustable variable tension is suitable for various types of fabrics and can automatically adjust the feeding speed according to the step size.



Peristaltic-pump Ink Supply + Auto Negative Pressure + Ink Degassing

The ink supply system with Peristaltic-pump ink supply + Auto negative pressure + Ink degassing can always supply ink constantly. It monitors and adjusts the negative pressure value, and promptly discharges air bubbles in the ink to ensure continuous and stable printing.

The above information is for reference only, Shenzhen HOMER Digital Equipment Co., Ltd. reserves the right of final interpretation. Subject to change without notice, the final information is subject to the contract.



SHENZHEN HOMER TEXTILE TECH CO., LTD

ADDRESS: NO.322 Yuanhu Road, Longgang District, Shenzhen, China

TEL: 0755-23080896

FAX: 0755-23217841

Website: <http://www.hanglorygroup.com>

Email: info-homer@hanglorygroup.com



HOMER
Digital Textile Printer

