

SPECIFICATIONS

Model	HT1600UV	
Printhead	Kyocera KJ4A	
Quantity of printheads	2-5 pcs (single row)	
Resolution	360*3600dpi	
Draft	49 m²/h	
Print speed	Production	44 m²/h
	Quality	31 m²/h
Max print width	1.6m	
Max media thickness	50mm	
Media type	Rigid and flexible flat materials	
Ink	Environmental friendly UV/LED curable ink(VOC free)	
Ink color	C、M、Y、K、W	
Machine size(L*W*H)	4.32*1.26*1.37m	
Machine net weight	800KG	
Machine gross weight	1210KG	
Power consumption	5.5 KW(24A )	
Power supply	230VAC. 50Hz L/N/PE	
RIP support	Caldera	
UV Curing	LED	
Interface	High Speed PCIE	
Environment	Seperated workroom in good cleaning and ventilated condition, avoid direct sunlight Temperature: 18° C – 30° C(64°F-86°F) Constant Humidity: 30%-70%	



# HT1600UV

Create value for customers; be a world-leading manufacturer of smart digital printing equipment.

- Diversified product configuration and application solution can match the different demand in advertising, decorating, glass and other industries.
- Reliable stability combines the outstanding printing quality and speed performance.
- Top-level R&D team ensures prompt optimization and upgrade for new products and keep advanced technology in digital printing field.
- Strong worldwide after-sales service team quickly shoots your problem.
- High cost-value product brings you more business.

©Above information for reference only and subject to change without notice. Shenzhen Handtop Tech Co.,Ltd all rights reserved.



Shenzhen HANDTOP Tech Co.,Ltd

Add: No.39 Qingfeng Road, Baolong Street, Longgang District, Shenzhen  
(2-3/F, Building C, Jingmida Digital Culture Industry Park - HanGlory Group)  
Tel: +86 0755-2796 0460 E-mail: info@hanglorygroup.com  
Fax: +86 0755-2321 7841 Web: www.hanglorygroup.com/en



## HT1600UV Hybrid Printer



### HT1600UV Hybrid

1.6m width MEDIA AREA

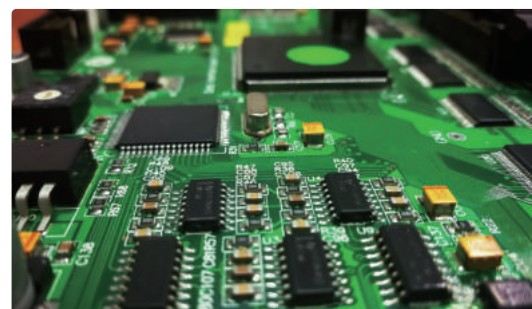
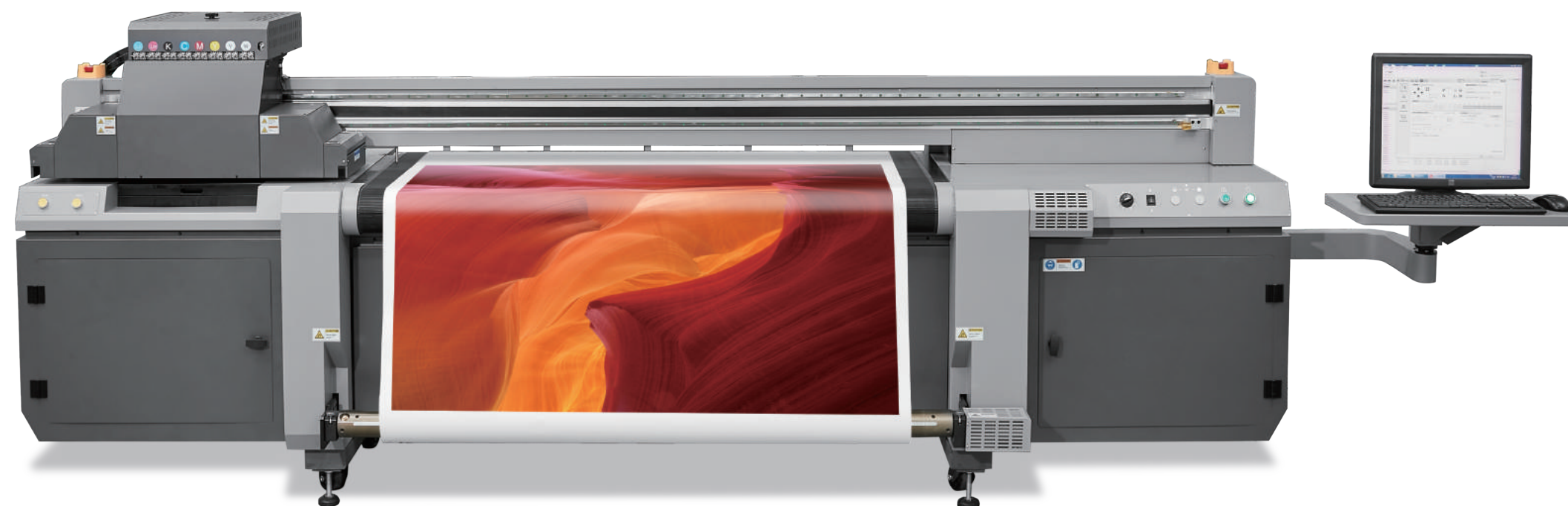
- **Automatic negative pressure system**  
Using PCB board to control negative pressure, setting the negative pressure data from software.
- **Kyocera Print Heads(one head with 2 colors)**  
Featuring variable dots, true grayscale imaging 4, 6, and 10pl .
- **LED**  
Instant curing of UV ink for fast production. Flexible to be controlled during printing.
- **Auto Height Detection System**  
Automatically detects the height of media up to 50mm thickness and calibrates print head distance for variable dot placement and image quality.
- **Retractable Alignment Bar**  
Retractable alignment bar allows accurate and consistent media placement.



carriage head



Industrialized wiring makes it more artistic



Self-developed, customized driver and PCB board

#### Kyocera KJ4A Printhead

Nozzle quality : 2656  
Physical Resolution : 2\*300dpi  
Pico-litter : Variable 4-6-10pl  
Max Operating Frequency : 30Khz  
Effective Print Width : 112.35mm



- **Static suppression(optional)**  
Optional static suppression kit that eliminates static on the substrate.
- **Emergency Stop Switches**  
Stop operation from any corner when the printer is in emergency.
- **On Board Control Module**  
Rich functions, self-developed software, independent control module, efficient and convenient.