



# HM1800B K24

## Industrial High-speed Conveying-belt Direct-to-textile Digital Printer



Productivity up to 355m<sup>2</sup>/hr  
in a high-resolution mode for  
high efficiency



Resolution up to 600x2400dpi  
for superior exquisite inkjet  
printing quality



Brand new 8-color × 3-row  
array stands out in the color  
combination



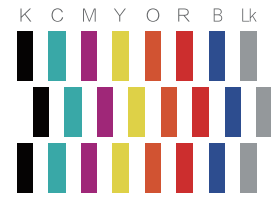
Multi-function optimization  
with simplified operation,  
workflow and maintenance



Complete digital textile  
printing solution with various  
options of ink and dryer

## Specifications

<b>Model</b>		HM 1800B K24		
<b>Printing Parameters</b>				
<b>Printhead</b>		24pcs / Industrial Piezoelectric Ceramic Print head		
<b>Production Mode</b>	<b>Resolution</b>	600x1200dpi (2pass)	600x1800dpi (3pass)	600x2400dpi (4pass)
	<b>Productivity</b>	355m <sup>2</sup> /hr	236m <sup>2</sup> /hr	177m <sup>2</sup> /hr
<b>Color</b>		C、M、Y、K、O、R、B、LK		
<b>Color Mode Supported</b>		Standard 8 colors × 3 rows		
<b>Ink</b>		Reactive ink, disperse ink (direct/transfer), pigment ink		
<b>Ink Tank Volume</b>		15L		



### 8-colorx3-Inkjet Solution

Brand new 8-color×3-row array improves jetting location accuracy of ink droplets  
Delicate textile printing with outstanding color performance

### Material | Take-up | Drying

<b>Material Information</b>	Maximum Media Width	Maximum Printing Width	Applicable Material Weight	Maximum Weight of Small Roll
	1920mm	1900mm	30—450 g/m <sup>2</sup>	100KG (full width)
<b>Maximum Unwind Roll Diameter</b>	Standard configuration: φ500mm   Jumbo Roll: φ1600mm (optional)   1000Kg			
<b>Media Type</b>	Cotton, linen, silk, nylon, polyester, blended, elastic fabrics, etc.			
<b>Media Conveying Method</b>	Continuous belt-conveying, auto constant tension feeding & take-up			
<b>Drying Method</b>	Conveyor belt + electric heating hot air circulation dryer (optional: steam-type)			
<b>Waste Gas Treatment</b>	Hot air circulation, adjustable exhaust gas forcing system (exhaust gas optional)			

### Electricity, Air and Water Parameters

<b>Water Supply</b>	0.6 Mpa   1 m <sup>3</sup> /hr
<b>Compressed Air Supply</b>	0.6 Mpa   3.5m <sup>3</sup> /hr (dry, oil-free and moisture-free)
<b>Printer Power &amp; Voltage</b>	AC 220 V±10% , single-phase   10 A( 1.7KW)   50Hz/60Hz Conveying-belt drying AC 220 V±10% , single-phase   29A(6.5KW)   50Hz/60Hz
<b>Dryer Voltage (optional)</b>	AC380V±10%, three-phase   31 A ( 16.5 KW)   50Hz/60Hz(Optional, Single-layer dryer with 1.6m tunnel For Reference Only)
<b>Cable Requirements</b>	Printer: 3*4 mm <sup>2</sup> , Dryer: 3*6 mm <sup>2</sup> (Optional, Single-layer dryer with 1.6m tunnel For Reference Only)

### Working Environment

<b>Temperature Range</b>	20~28 degrees Celsius (68~82 degrees Fahrenheit)
<b>Humidity Range</b>	45% -70 % (no condensation)

### Installation size

<b>Net Size &amp; Weight of Printer</b> (Jumbo Roll is not included)	4656 mm x 2300 mm x 2277 mm (L*W*H)   Weight (kg): 3050
<b>Dryer Size &amp; Weight</b>	2850 mm x 2190 mm x 1450 mm (L*W*H)   Weight (kg): 1200 (Optional, Single-layer dryer with 1.6m tunnel For Reference Only)
<b>Printer Packaging Size</b>	4850mm x2250 mm x2250 mm (L*W*H)   Weight (kg): 3900
<b>Dryer Packaging Size</b>	2280mm x2960 mm x1730 mm (L*W*H)   Weight (kg) 1600 (Optional, Single-layer dryer with 1.6m tunnel For Reference Only)
<b>Minimum Installation Site Size</b> (A-frame feeder is not included)	8650 mm x 7050 mm x 2500 mm (L*W*H) (The above site size is based on a single-layer Dryer with 1.6m drying tunnel. For other dyers, please contact HOMER Company)

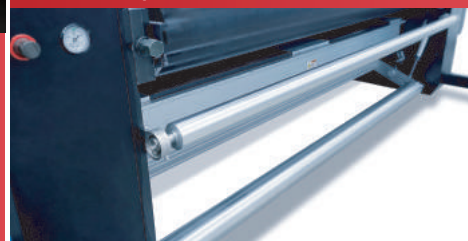


### Collocation of Linear Motor and Steel Guide Rail

The combination of high-precision steel guide rail beam and advanced magnetic levitation motor keeps the carriage stable and smooth during the printing process and improves productivity.

### Wind/Unwind Tension-adjustable Technology

The continuous winding/unwinding control technology with adjustable variable tension is suitable for various types of fabrics and can automatically adjust the feeding speed according to the step size.



### Peristaltic-pump Ink Supply + Auto Negative Pressure + Ink Degassing

The ink supply system with Peristaltic-pump ink supply + Auto negative pressure + Ink degassing can always supply ink constantly. It monitors and adjusts the negative pressure value, and promptly discharges air bubbles in the ink to ensure continuous and stable printing.

The above information is for reference only, Shenzhen HOMER Digital Equipment Co., Ltd. reserves the right of final interpretation. Subject to change without notice, the final information is subject to the contract.



### SHENZHEN HOMER TEXTILE TECH CO., LTD

Address: No.39 Qingfeng Road, Baolong Street, Longgang District, Shenzhen  
(2-3/F, Building C, Jingmida Digital Culture Industry Park - HanGlory Group)  
Tel: 0755-23080896  
Fax: 0755-23217841  
Website: www.hanglorygroup.com/en  
Email: info@hanglorygroup.com

